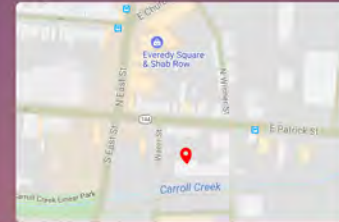


340 EAST PATRICK STREET

Office 34,814 sf
Retail 15,778 sf
On Carroll Creek
Office 56% Leased Retail
Delivery Spring 2018

- * Walking distance to everything in Downtown Frederick, Maryland
- * Rustic Industrial space
- * High Ceilings
- * Largest Office retail space in Downtown Frederick
- * Great visibility from East Street
- * On Site parking
- * Subdividable

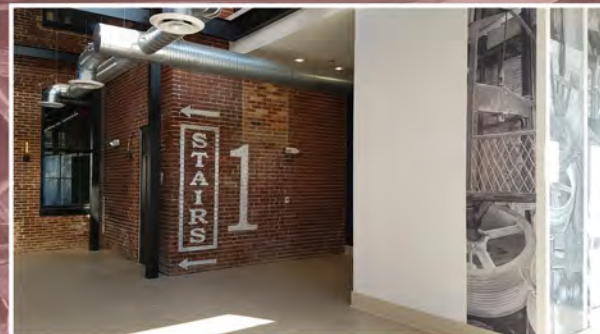
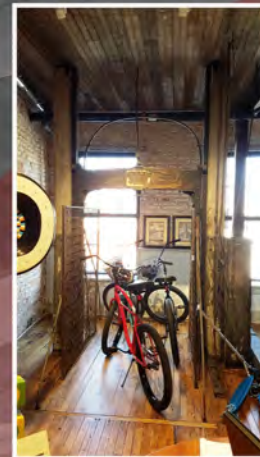
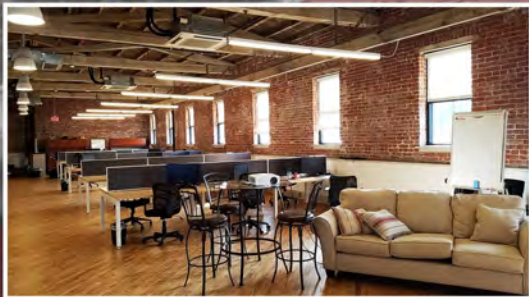


 **MACKINTOSH, INC.**
COMMERCIAL BROKERAGE

FOR LEASING CONTACT:
JIM MACKINTOSH
O: 240-529-0101 | C: 301-748-3698
JMACKINTOSH@MACKINTOSHCO.COM



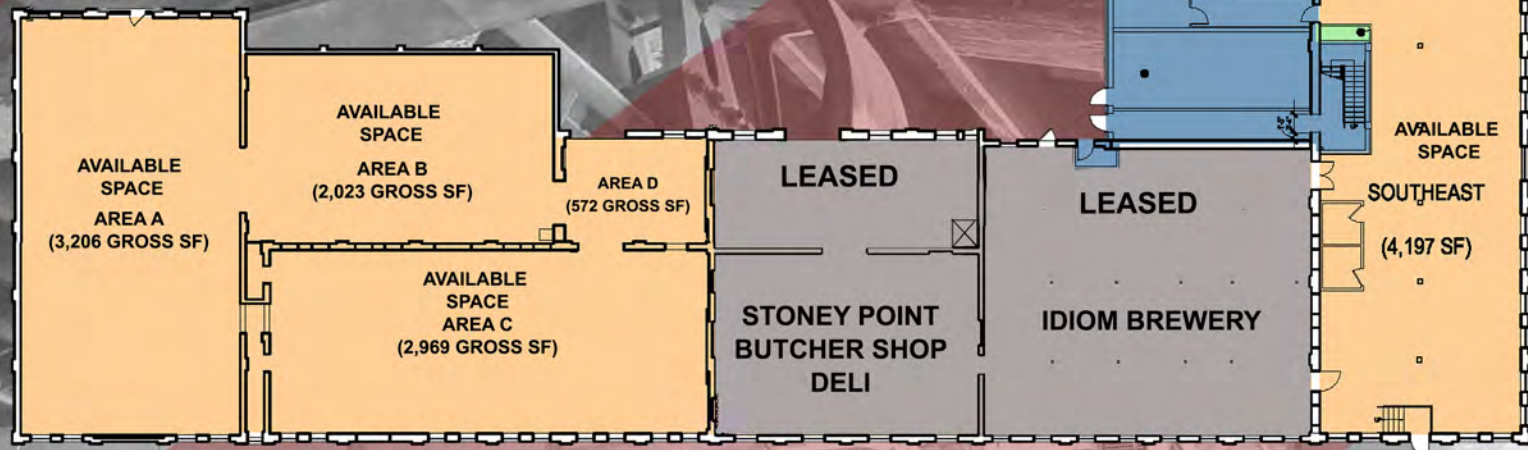
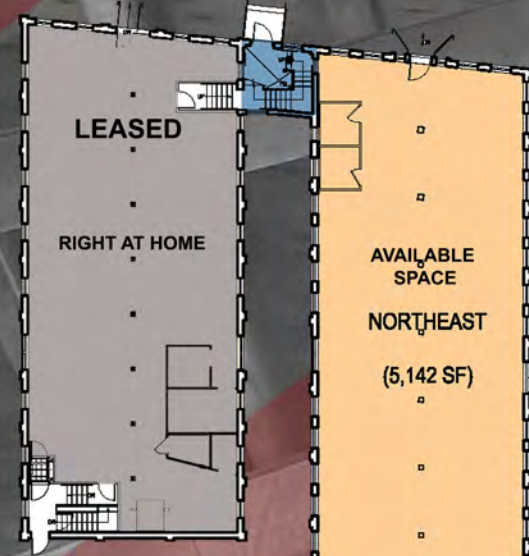
UNION MILLS



FREDERICK MD



340 EAST PATRICK STREET





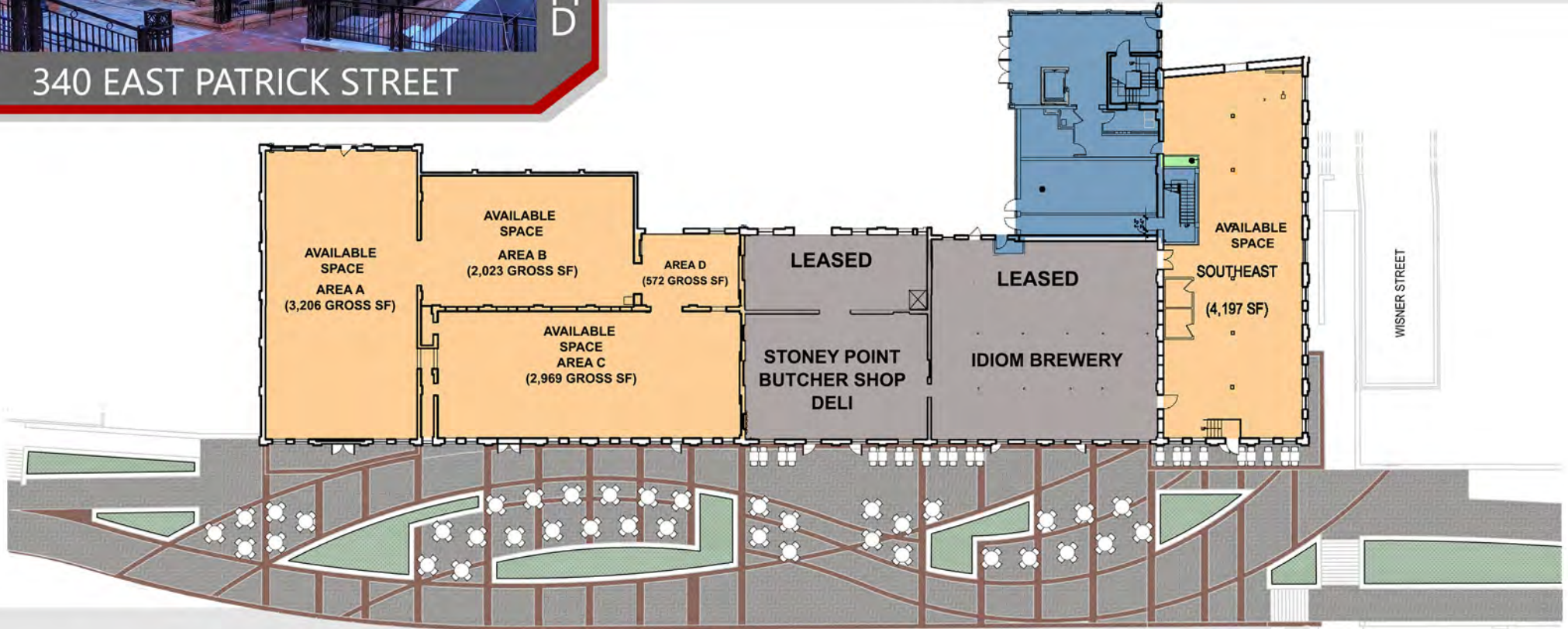
FREDERICK MD



UNION MILLS | 1ST FLOOR
OUTDOOR SEATING PLAN

340 EAST PATRICK STREET

RETAIL



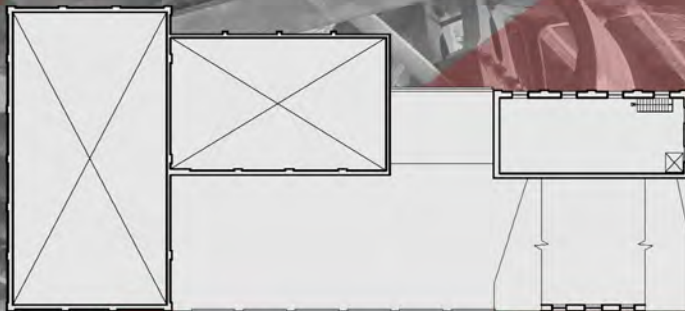
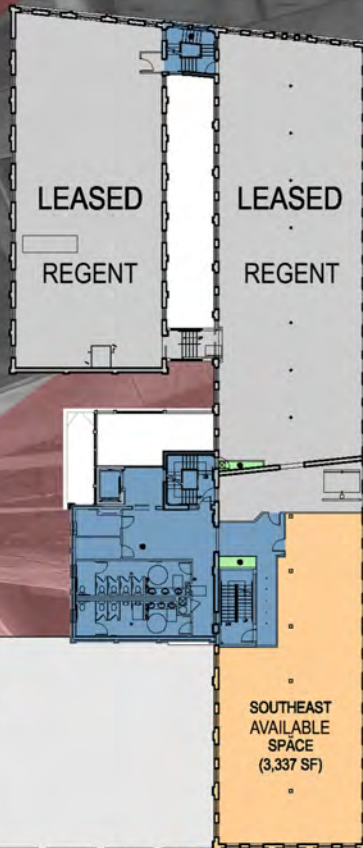
CARROLL CREEK OUTDOOR SEATING PLAN



FREDERICK
MD

340 EAST PATRICK STREET

UNION MILLS | 2ND FLOOR

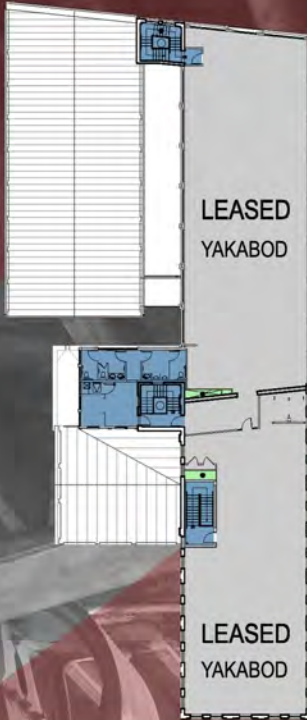




340 EAST PATRICK STREET

FREDERICK
MD

UNION MILLS | 3RD FLOOR



SOUTH ELEVATION



 MACKINTOSH, INC.
COMMERCIAL BROKERAGE

FOR LEASING CONTACT:
JIM MACKINTOSH
O: 240-529-0101 | C: 301-748-3698
JMACKINTOSH@MACKINTOSHCO.COM

3