

**NOW
AVAILABLE**

**2260 25TH PLACE, NE
WASHINGTON, DC**

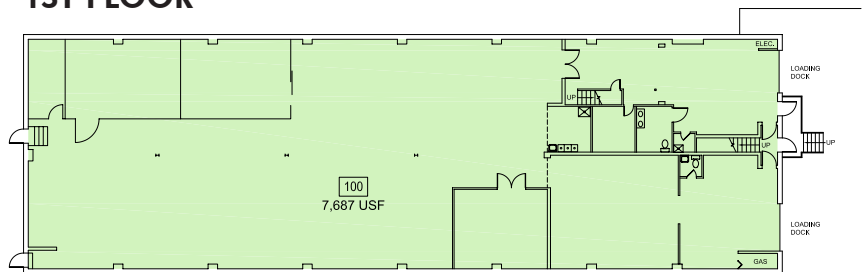
**PERFECT FOR COMMERCIAL KITCHEN,
BREWERY, FOOD DISTRIBUTION**

- 9,313 SF Available
- Existing +/- 900 sf cooler
- small kitchen prep area
- Ventilation in place
- Fully air conditioned
- 2 docks
- 1,600 sf mezzanine office space
- \$11.95 PSF NNN

Centrally located three blocks from the intersection of Bladensburg Road NE and New York Avenue NE, the building is ideally suited for industrial and commercial uses.

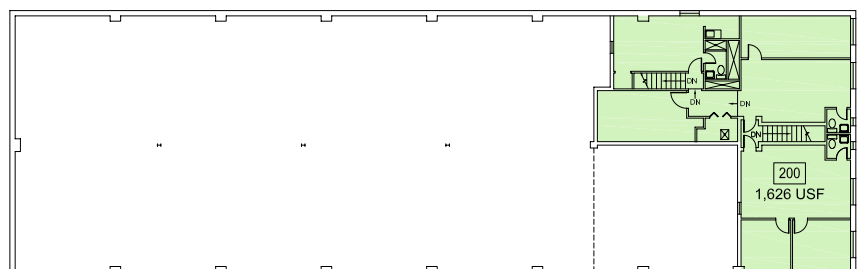
SITE PLAN

1ST FLOOR



① FIRST FLOOR
SCALE: NTS

2ND FLOOR



① SECOND FLOOR
SCALE: NTS

FOR MORE INFORMATION

Ralph Haught
First Vice President
+1 202 585 5573
ralph.haught@cbre.com

Jay O'Donnell
Senior Associate
+1 202 585 5639
jay.odonnell@cbre.com

CBRE

LOCATION



FOR MORE INFORMATION

Ralph Haught
First Vice President
+1 202 585 5573
ralph.haught@cbre.com

Jay O'Donnell
Senior Associate
+1 202 585 5639
jay.odonnell@cbre.com



CBRE

