

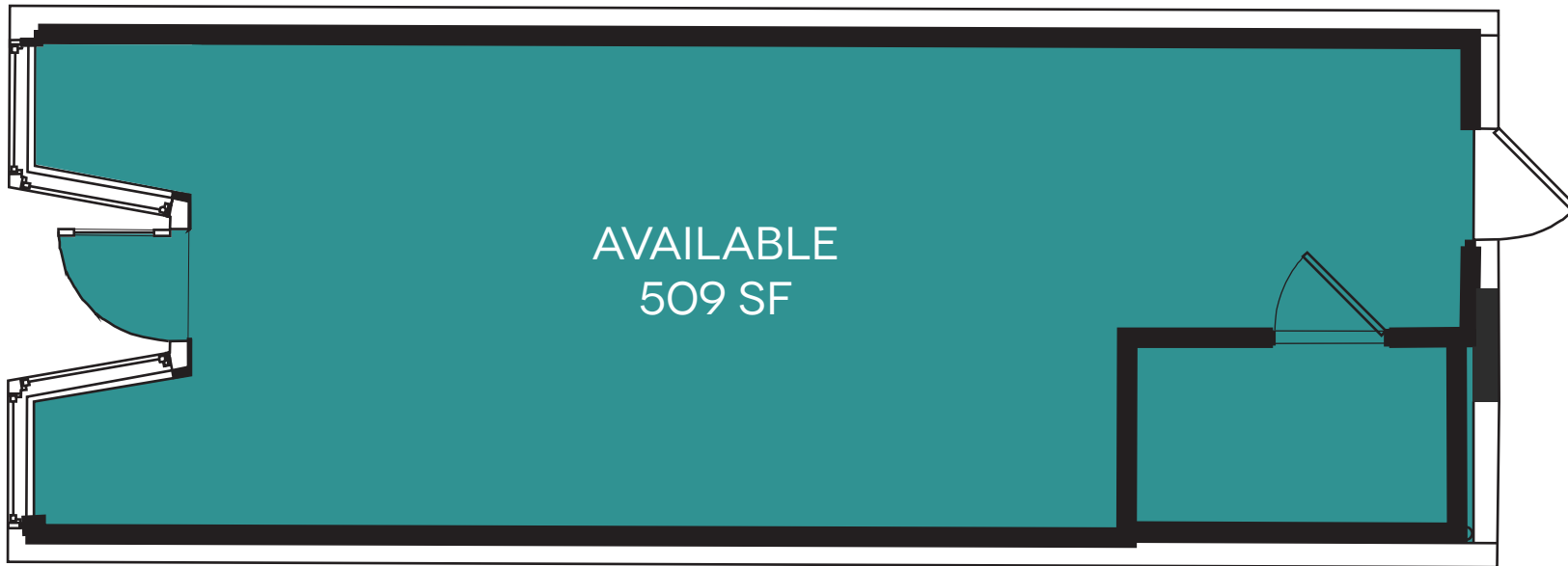
# 1916

MLK JR. AVE SE

509 SF OF AVAILABLE RETAIL



# FLOOR PLAN



**EXCELLENT**  
ACCESS TO METRO RAIL,  
I-295, AND THE SUITELAND  
PARKWAY

**BUSY BOYS  
& POETS**  
COMING SOON

**62,594**  
DAYTIME POPULATION  
WITHIN A 5  
MINUTE TIME

**CALL**  
FOR INFORMATION  
ON PRICING

**509**  
SQUARE FEET

FOR LEASING INFORMATION, CONTACT:  
MATTHEW JEMAL  
MJEMAL@DOUGLASDEV.COM